

## PASSWORD COMPLEXITY MANAGER (PCM)

PASSWORD COMPLEXITY MANAGER (PCM) IS A COMPLETE, USER-FRIENDLY ALTERNATIVE TO MICROSOFT'S FINE GRAINED PASSWORD POLICIES. PCM PUTS SYSTEM ADMINISTRATOR IN THE DRIVER'S SEAT WITH A FLEXIBLE SOLUTION TO CREATE AND MANAGE THE RULES YOU CHOOSE TO IMPLEMENT FOR PASSWORD COMPLEXITY.

### OVERVIEW

- ▶ Password Complexity Manager (PCM) is a complete, user friendly alternative to Microsoft's Fine Grained Password Policies.
- ▶ PCM gives system administrators control over which password complexity rules are created and how they are implemented.
- ▶ End users see on-screen messaging that helps guide their password setup according to established rules..

### TECHNICAL FEATURES

#### ▶ Installation

- The PCM solution can be installed within an hour thanks to a simple, straight-forward implementation process
- PCM is managed through a system administration management console, where the policies can be configured for all domain controllers in one central place

#### ▶ Security

- Expanded options for the complexity rules related to the default password of Windows Active Directory provide enhanced network security
- Set varying security levels for different types of end users groups based on organizational roles and responsibilities at the domain and organizational unit (OU) level

#### ▶ User Interface

- PCM offers a customized interface to minimize disruption and maximize end user convenience for changing passwords.
- End users see an on-screen message displaying a step-by-step overview of complexity rules that have and have not been met as they go, so they know, for example, that an uppercase letter, number and symbol are required as they enter the data.

#### ▶ Compatibility

- PCM gives you the flexibility to meet compliance requirements for policies including HIPAA and SOX
- Native integration with Windows
- PCM seamlessly integrates with domain controllers on your network and meets the standards set by Microsoft for integration with a domain controller.

- The basic operation of Microsoft password management remains unchanged.
- Interface for setting complexity rules
- PCM offers a number of defined rules and allows you to determine which rules to apply and when including:
  - o Minimum password length (less than 8 characters is allowed);
  - o Maximum password length;
  - o The maximum number of repeated characters. This prevents passwords with the same characters;
  - o Password must contain a capital letter (s);
  - o Password must contain smallest letter (s) case;
  - o Password must contain punctuation mark (s);
  - o Password must contain number (s);
  - o Password must contain character (s) from a specific series;
  - o Password must be x different percentage of old passwords. This avoids, for example, adding a number to the end of a new password;
  - o Password shall be in accordance with a regular expression;
  - o Password may not conform to a normal expression.

#### ▶ Integration of Password Management Solutions

PCM seamlessly integrates with the Self Service Reset Password Management (SSRPM) solution providing end users with the ability to reset their passwords based on a series of simple, predefined questions eliminating the need for calls or emails to your Helpdesk.

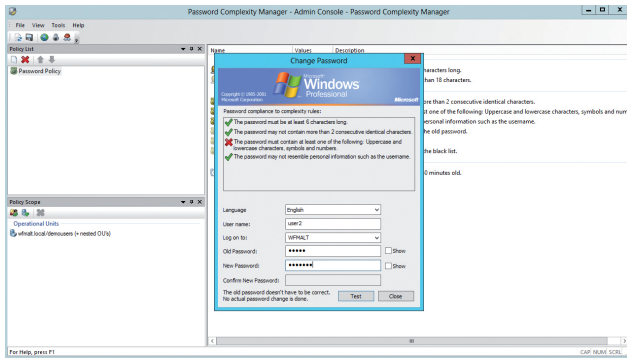
## SYSTEM REQUIREMENTS

### Server Hardware

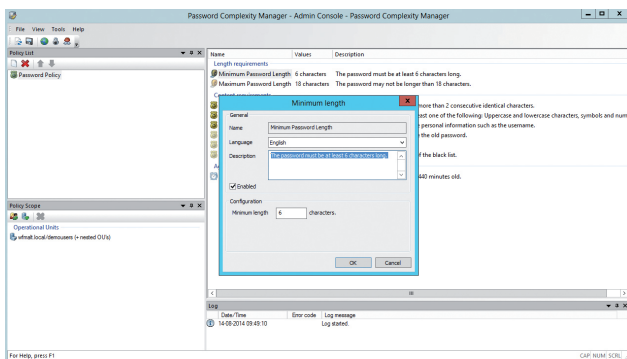
- Intel I3 processor or higher
- 4 GB of RAM or greater
- 40GB hard drive or greater
- Virtual machine environment fully supported
- Depending on the exact configuration and used components the system requirements may vary.

### Software

- Client side
  - o Windows XP or later
  - o Citrix and Microsoft Terminal Services fully supported
- Server side
  - o Windows Server 2003 or later
  - o 32 and 64-bit support



PCM has an admin interface where the complexity rules are easy to set up and test. Here they can test the complexity rules themselves.



Easily add or modify password complexity rules in the admin interface.

**CONTACT TOOLS4EVER TODAY TO LEARN MORE ABOUT HOW PCM CAN HELP SIMPLIFY AND STREAMLINE YOUR PASSWORD MANAGEMENT WORKFLOWS.**

**EAST - CALL: 866-482-4414 OR EMAIL US AT: [NASALES@TOOLS4EVER.COM](mailto:NASALES@TOOLS4EVER.COM)  
WEST - CALL: 888-770-4242 OR EMAIL US AT: [NWSALES@TOOLS4EVER.COM](mailto:NWSALES@TOOLS4EVER.COM)**

